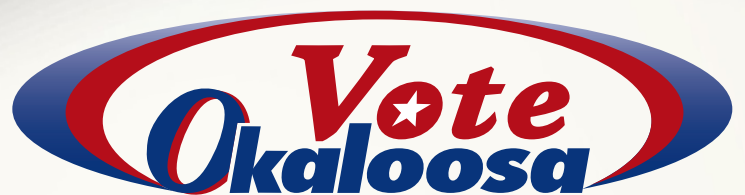


OKALOOSA COUNTY SAMPLE BALLOT

GENERAL ELECTION NOVEMBER 8, 2016



Paul Lux, Okaloosa County Supervisor of Elections

Your Vote Counts!

Dear Voters,

We have prepared this Sample Ballot booklet to help guide you through the races you will be voting on in the November 8 General Election and to update you with any changes in laws or procedures that might have happened since the last time you voted.

By now, many of you are familiar with the numerous amendments to Florida's Constitution that typically appear on General Election ballots. This year is no different. There are four Constitutional Amendments, numbered 1, 2, 3, and 5, on the General Election ballot. Amendment Number 4 appeared on the August 30 Primary Election ballot. When an amendment appears out of cycle on an election ballot, the subsequent election's amendments are not renumbered, so the gap in numbering on the General Election ballot is intentional. Please take time to familiarize yourself with the amendments before you go vote. Being informed will save you time at the polls!

Some other important things to remember:

- **This year's ballot is two sides!** Be certain to vote both sides of the ballot as directed. Feel free to mark this sample ballot and take it with you to the voting booth. Additional copies can be found on our website at www.GoVote-Okaloosa.com and are available at both offices of the Okaloosa County Supervisor of Elections.
- **Have you moved recently?** You can save yourself a lot of time and headache on election day by updating your voter record with us prior to November 8. Call or email us, go online, or visit us in person to update your information and learn the location of your new polling place. *Remember, it is a felony to vote in a precinct other than that in which you reside.*
- **Did you bring a photo and signature ID?** Whether you vote early or at the polls, you must present a form of valid photo and signature identification. The most commonly used is a Florida driver's license. *If your photo ID does not contain your signature, you will be asked to provide an additional identification that includes your signature.* If you fail to bring ID you will be asked to vote a Provisional Ballot. Your Voter Information Card cannot be used as identification at the polls. Please see the updated list of the 12 valid forms of identification listed on page 5.
- **Do you need assistance voting?** You can bring a friend or relative, but our Patriot Poll Workers are well trained and qualified to assist you, too. All polling places also have electronic ballot-marking devices that allow most voters with disabilities to vote independently and in secret. Just ask!

If you still have questions after reviewing this Sample Ballot Booklet, please visit our website at www.GoVote-Okaloosa.com or feel free to email me at plux@co.okaloosa.fl.us at any time. It is my honor and privilege to continue serving you as your Supervisor of Elections.

Sincerely,



Paul Lux
Supervisor of Elections

3 Easy Ways to

**Early Voting for the November 8, 2016, General Election will be held:
Monday, October 24 - Saturday, November 5**
Early Voting Hours - 7 AM - 7 PM ALL Days at the following locations:



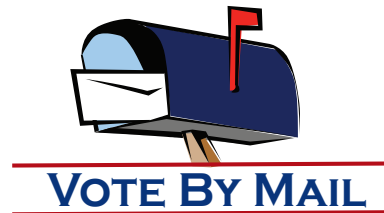
Destin Community Center
101 Stahlman Ave
Destin, FL 32541

Election Headquarters
302 Wilson St N Ste 102
Crestview, FL 32536

Niceville City Hall
208 N Partin Dr
Niceville, FL 32578

Crestview Community Center
1446 Commerce Drive
Crestview, FL 32539

Okaloosa County Administration Building
1250 Eglin Pkwy
Shalimar, FL 32579



Move your polling place to your living room. Request your ballot by contacting the Supervisor of Elections Office via telephone, email, mail, in person or by visiting our website. Vote by Mail ballots must be received by the Supervisor of Elections office by 7 PM on Election Day in order to be counted. The deadline to request a Vote by Mail ballot be mailed to you is November 2, 2016.



**Polls are open 7 AM - 7 PM on Election Day!
General Election - November 8, 2016**

Be sure to bring your current and valid photo ID for precinct and early voting! If the photo ID does not contain your signature, an additional ID that includes your signature will be required.

Approved forms of photo ID are:

- Florida Driver's License
- Military ID
- Current U.S. Passport
- Florida ID Card issued by the Department of Highway Safety & Motor Vehicles
- Public Assistance ID
- FL Concealed Carry License
- Veteran Health ID Card
- Federal, State, County, or Local Government Employee ID Card
- Debit/Credit Cards
- Student ID
- Retirement Center ID
- Neighborhood Association ID

Find Election Information on our website
www.GoVote-Okaloosa.com



Election Headquarters
302 Wilson Street N., Ste 102
Crestview, Florida 32536
Phone: 850-689-5600
Fax: 850-689-5644

Branch Location
1250 Eglin Pkwy, Ste 103
Shalimar, FL 32579
Phone: 850-651-7272

VOTE BY MAIL

As of July 1, 2016 Absentee Voting is now Vote by Mail in the state of Florida. Vote by Mail is by paper ballot (optical scan) issued and received by envelope. The most convenient way to obtain your Vote-by-Mail ballot is to contact the elections office by telephone at (850)689-5600 or (850)651-7272. You can also request a Vote-by-Mail ballot by email, mail, in person, or by visiting our website at www.GoVote-Okaloosa.com. By Florida Statute, ballots may only be sent to an address currently on record. To have your ballot sent to a different mailing address, that request must be made in writing with a signature. Only a voter's immediate family can pick up a Vote-by-Mail ballot beginning the fifth day before Election Day (November 3). A voter must designate the family member in writing.

The deadline for requesting a ballot to be mailed is the sixth day prior to the election (November 2) and last day our office can mail ballots to voters is the fourth day prior (November 4). Vote-by-Mail ballots must be received in the elections office by 7:00 PM on Election Day. Ballots may not be dropped off at precincts or early voting sites.

PROVISIONAL BALLOTS

In order to ensure that no eligible voter is turned away, the law provides a method of voting for a person whose eligibility may be questioned at the polls. If no final determination can be made at the time of voting, or if the voter disagrees with a determination of eligibility, he or she may vote a provisional ballot. This ballot is secured in an envelope and the Canvassing Board will determine whether it is to be counted after research is completed by the elections office.

In addition, the voter has until 5:00 PM on the second day after the election to provide any further evidence he or she may have to prove his or her eligibility. All provisional voters are given written notice of free access to information on the disposition of his or her own provisional ballot.

Please note: A voter who fails to bring photo and signature ID when voting is required by law to vote a provisional ballot. However, no further proof of eligibility is required by the voter. The voter's signature will be compared to the signature on file and counted if it matches. Voting by affirmation for lack of ID has been repealed.

SIGNATURE UPDATE

Has your signature changed from

 to 

If so, please update your signature at either of our offices. Any voter who needs to update his or her signature must do so before the October 25, 2016, Canvassing Board meeting.

HOW TO MARK A PAPER BALLOT (OPTICAL SCAN)



OTHER IMPORTANT VOTING INFORMATION

IDENTIFICATION

Voter Information cards are not a valid form of identification when voting. Be sure to bring a current and valid photo ID for precinct and early voting. If the photo ID does not contain your signature, an additional ID that includes your signature shall be required. If you do not bring any ID, you will be allowed to vote; however, you will be asked to vote a provisional ballot. Approved forms of photo ID are:

- | | | |
|---|-------------------------------|--|
| • Florida Driver's License | • Debit/Credit Cards | • Public Assistance ID |
| • Florida ID Card issued by the Department of Highway Safety & Motor Vehicles | • Student ID | • FL Concealed Carry License |
| • Military ID | • Retirement Center ID | • Veteran Health ID Card |
| • Current U.S. Passport | • Neighborhood Association ID | • Federal, State, County, or Local Government Employee ID Card |

ADDRESS CHANGE

If you have moved recently and have a new address other than the one in the poll register, you will be asked to see the Clerk to determine if you are in the correct precinct. It is a third-degree felony to vote in a precinct other than which you live. If you would like to verify your address with our office before Election Day, just call, email us, or use our online Voter Lookup Tool.

NEED ASSISTANCE AT THE POLLS?



Need assistance to vote? You can bring a friend or family member, but our Patriot Poll Workers are well trained and qualified to assist you. All polling places are accessible to voters with special needs. AutoMARK ballot marking devices are available for voters with disabilities to vote secretly and independently.

SAMPLE

Official General Election Ballot
November 8, 2016
Okaloosa County, Florida

SAMPLE

- Instructions: To vote, fill in the oval completely (●) next to your choice. Use only the marking device provided or a blue or black pen.
- If you make a mistake, ask for a new ballot. Do not cross out or your vote may not count.
- To vote for a write-in candidate, fill in the oval and print the name clearly on the blank line provided for the write-in candidate.

President and Vice President (Vote for One)		State Senator District 1 race will appear ONLY in the following Precincts: part of 3, 4, 10, 17, 23, 29, all of 34, part of 38, 42, 45, and all of 47.	District Court of Appeal
<input type="radio"/> Donald J. Trump Michael R. Pence	REP	State Senator District 1 (Vote for One)	Shall Judge Ross Bilbrey of the 1st District Court of Appeal be retained in office?
<input type="radio"/> Hillary Rodham Clinton Timothy Michael Kaine	DEM		<input type="radio"/> Yes <input type="radio"/> No
<input type="radio"/> Gary Johnson Bill Weld	LPF	<input type="radio"/> Doug Broxson <input type="radio"/> Write-in	Shall Judge Susan Kelsey of the 1st District Court of Appeal be retained in office?
<input type="radio"/> Darrell L. Castle Scott N. Bradley	CPF	State Representative District 4 race will appear ONLY in the following Precincts: part of 3, 4, 7, 8, all of 9 through 12, part of 13, all of 14 through 50, and all of 52.	<input type="radio"/> Yes <input type="radio"/> No
<input type="radio"/> Jill Stein Ajamu Baraka	GRE		Shall Judge Lori S. Rowe of the 1st District Court of Appeal be retained in office?
<input type="radio"/> Roque "Rocky" De La Fuente Michael Steinberg	REF	State Representative District 4 (Vote for One)	<input type="radio"/> Yes <input type="radio"/> No
<input type="radio"/> Write-in		<input type="radio"/> Mel Ponder <input type="radio"/> Write-in	Shall Judge Kent Wetherell of the 1st District Court of Appeal be retained in office?
United States Senator (Vote for One)		Board of County Commissioners District 1 (Vote for One)	<input type="radio"/> Yes <input type="radio"/> No
<input type="radio"/> Marco Rubio	REP	<input type="radio"/> Graham Fountain <input type="radio"/> Write-in	Shall Judge Bo Winokur of the 1st District Court of Appeal be retained in office?
<input type="radio"/> Patrick Murphy	DEM	Justice of the Supreme Court	<input type="radio"/> Yes <input type="radio"/> No
<input type="radio"/> Paul Stanton	LPF		Shall Justice Charles T. Canady of the Supreme Court be retained in office?
<input type="radio"/> Tony Khoury	NPA	<input type="radio"/> Yes <input type="radio"/> No	Shall Judge Jim Wolf of the 1st District Court of Appeal be retained in office?
<input type="radio"/> Bruce Nathan	NPA	Shall Justice Jorge Labarga of the Supreme Court be retained in office?	<input type="radio"/> Yes <input type="radio"/> No
<input type="radio"/> Steven Machat	NPA		Destin, Ocean City-Wright, North Bay, and North Okaloosa Fire Commissioner races will appear in this column. (See facing page.)
<input type="radio"/> Basil E. Dalack	NPA	Bluewater Bay MSBU Seat 3 race will appear in this column. (See facing page.)	
<input type="radio"/> Write-in			
Representative in Congress District 1 (Vote for One)		<input type="radio"/> Yes <input type="radio"/> No	
<input type="radio"/> Matt Gaetz	REP	Shall Justice Ricky L. Polston of the Supreme Court be retained in office?	
<input type="radio"/> Steven Specht	DEM		<input type="radio"/> Yes <input type="radio"/> No
Vote Both Sides of Page			

The races below will appear on the front of the ballot
ONLY in the precincts or parts of precincts as indicated.

SAMPLE

Official General Election Ballot
November 8, 2016
Okaloosa County, Florida

SAMPLE

- Instructions: To vote, fill in the oval completely (●) next to your choice. Use only the marking device provided or a blue or black pen.
- If you make a mistake, ask for a new ballot. Do not cross out or your vote may not count.
- To vote for a write-in candidate, fill in the oval and print the name clearly on the blank line provided for the write-in candidate.

Destin Fire District All of Precinct 20, 35, 44, 49, and 50
Destin Fire Commissioner Group 2 (Vote for One)
<input type="radio"/> John Harvey <input type="radio"/> Rick Moore
Destin Fire Commissioner Group 4 (Vote for One)
<input type="radio"/> George Giganti <input type="radio"/> Tommy Green
Ocean City-Wright Fire District Part of Precinct 10, all of 16, 17, 18, 27, part of 29, all of 31, 37, 38, 39, and part of 42
Ocean City-Wright Fire Commissioner Group 4 (Vote for One)
<input type="radio"/> Aaron L. Brown <input type="radio"/> Dave Parisot
In the race for Ocean City-Wright Fire Commissioner Group 2, Candidate Mike Urenda passed away. The remaining candidate, Donna Lambert, is therefore elected without opposition.

North Bay Fire District Part of Precinct 26, all of 40 and 46
North Bay Fire Commissioner Group 3 (Vote for One)
<input type="radio"/> James W. Boswell <input type="radio"/> David E. Scholl
North Bay Fire Commissioner Group 5 (Vote for One)
<input type="radio"/> Jeffrey David Jones <input type="radio"/> Roy Taylor
North Okaloosa Fire District Part of Precinct 3, 6, 8, 9, 11, 12, 13, 45, 51, and 52.
North Okaloosa Fire Commissioner Group 5 (Vote for One)
<input type="radio"/> Rollin E. Rathbun III <input type="radio"/> Gene Wright
Bluewater Bay MSBU Part of Precinct 26, all of 40, and part of 46
Bluewater Bay MSBU Seat 3 (Vote for One)
<input type="radio"/> Steve Boswell <input type="radio"/> David Vardaman

Back of Ballot **All precincts, all styles**

<div> <div>No. 1 Constitutional Amendment Article X, Section 29</div> <div> <div>Rights of Electricity Consumers Regarding Solar Energy Choice</div> <div> <p>This amendment establishes a right under Florida's constitution for consumers to own or lease solar equipment installed on their property to generate electricity for their own use. State and local governments shall retain their abilities to protect consumer rights and public health, safety and welfare, and to ensure that consumers who do not choose to install solar are not required to subsidize the costs of backup power and electric grid access to those who do.</p> <p>The amendment is not expected to result in an increase or decrease in any revenues or costs to state and local government.</p> <div> <input type="radio"/> Yes <input type="radio"/> No </div> </div> </div> </div> <div> <div>No. 2 Constitutional Amendment Article X, Section 29</div> <div> <div>Use of Marijuana for Debilitating Medical Conditions</div> <div> <p>Allows medical use of marijuana for individuals with debilitating medical conditions as determined by a licensed Florida physician. Allows caregivers to assist patients' medical use of marijuana. The Department of Health shall register and regulate centers that produce and distribute marijuana for medical purposes and shall issue identification cards to patients and caregivers. Applies only to Florida law. Does not immunize violations of federal law or any non-medical use, possession or production of marijuana.</p> <p>Increased costs from this amendment to state and local governments cannot be determined. There will be additional regulatory costs and enforcement activities associated with the production, sale, use and possession of medical marijuana. Fees may offset some of the regulatory costs. Sales tax will likely apply to most purchases, resulting in a substantial increase in state and local government revenues that cannot be determined precisely. The impact on property tax revenues cannot be determined.</p> <div> <input type="radio"/> Yes <input type="radio"/> No </div> </div> </div> </div>
--

<div> <div>No. 3 Constitutional Amendment Article VII, Section 6 Article XII</div> <div> <div>Tax Exemption for Totally and Permanently Disabled First Responders</div> <div> <p>Proposing an amendment to the State Constitution to authorize a first responder, who is totally and permanently disabled as a result of injuries sustained in the line of duty, to receive relief from ad valorem taxes assessed on homestead property, if authorized by general law. If approved by voters, the amendment takes effect January 1, 2017.</p> <div> <input type="radio"/> Yes <input type="radio"/> No </div> </div> </div> </div> <div> <div>No. 5 Constitutional Amendment Article VII, Section 6 Article XII</div> <div> <div>Homestead Tax Exemption for Certain Senior, Low-Income, Long-Term Residents; Determination of Just Value</div> <div> <p>Proposing an amendment to the State Constitution to revise the homestead tax exemption that may be granted by counties or municipalities for property with just value less than \$250,000 owned by certain senior, low-income, long-term residents to specify that just value is determined in the first tax year the owner applies and is eligible for the exemption. The amendment takes effect January 1, 2017, and applies retroactively to exemptions granted before January 1, 2017.</p> <div> <input type="radio"/> Yes <input type="radio"/> No </div> </div> </div> </div>
--

Please note - Constitutional Amendment No. 4, Article VII, Sections 3 and 4, Article XII, Section 34 appeared on the August 30, 2016 Primary Election Ballot and is not included on the November 8, 2016 General Election Ballot.

Vote Both Sides of Page

QUESTIONS ABOUT CONSTITUTIONAL AMENDMENTS

We are frequently asked where to find more information about the numerous Constitutional Amendments on the ballot. There are a number of resources that can be found online for this information. We have listed a few for you below. Please remember that these websites are third-party sites and any opinions found therein are the sole responsibility of that organization.

Florida Division of Elections

<http://dos.myflorida.com/media/696216/constitutional-amendments-2016-general-english-booklet.pdf>

League of Women Voters of Florida

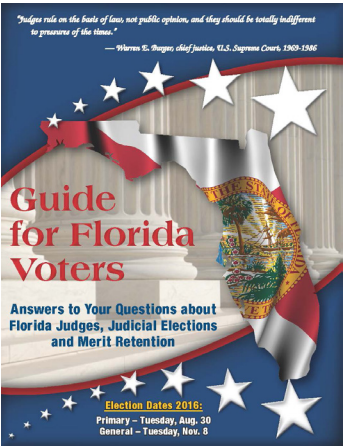
<http://bereadytovote.org/2016-florida-constitutional-ballot-amendments/>

BallotPedia

https://ballotpedia.org/Florida_2016_ballot_measures

James Madison Institute

<http://www.jamesmadison.org/Library/docLib/2016-Amendment-Guide.pdf>



QUESTIONS ABOUT JUDICIAL MERIT RETENTION

We also receive many questions about the judicial merit retention races on the ballot. This year there are three Supreme Court Justices and six District Court of Appeal Judges. The Florida Bar Association has published this helpful guide, available through our website:

www.GoVote-Okaloosa.com

You can also visit them directly at: <http://www.floridabar.org/thevotesinyourcourt>
Please do not hesitate to contact us if you have any further questions.

PAUL LUX, OKALOOSA COUNTY SUPERVISOR OF ELECTIONS

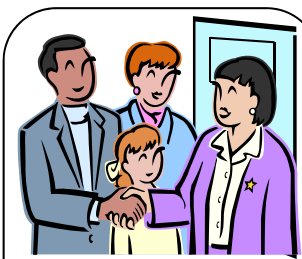
Elections Headquarters

302 Wilson Street, North, Suite 102
Crestview, FL 32536
Phone: (850)689-5600
Fax: (850)689-5644

Branch Office

1250 Eglin Pkwy, Suite 103
Shalimar, FL 32579
Phone: (850)651-7272

WHAT TO EXPECT AT THE POLLS



THE BAILIFF

I'm a special deputy who will greet you at the door and provide assistance when needed. I'll remind you to silence your cell phone and to have your ID ready!



THE GREETER

I'm especially helpful to first-time voters, giving ballot demonstrations and answering most questions. I even have special ballots for the kids, too!



EVID INSPECTOR

I have the poll register with your name in it. I'll ask for your ID and check your signature before giving you a Voting Pass. I should never tell you that you can't vote!



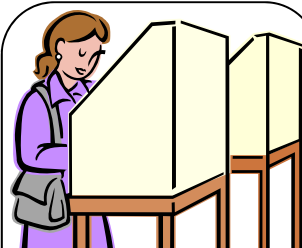
BALLOT INSPECTOR

I take your Voting Pass and give you your ballot in a secrecy folder. Then I'll point your way to the voting booth to mark your ballot.



THE AUTOMARK

The law requires that each precinct have a voting machine for voters with special needs. It helps voters who have visual or other impairments to vote independently.



VOTE!

Vote your secret ballot in the booth provided. **If you make a mistake, please ask for a new ballot!** All done? Put your ballot in the folder and head for the Ballot Box.



BALLOT BOX INSPECTOR

I stand near the Ballot Box to assist voters should a problem arise. If one does, I can always call the Clerk!



NEED ASSISTANCE?

If you have any special needs that will make your voting experience easier and faster, just ask! There are plenty of friendly poll workers waiting to help!



THE CLERK

I'm in charge of the precinct. If you have any questions or need extra assistance, I'll be happy to help. There's no problem I can't solve!



SOLICITATION

Equally popular and unpopular, the law prohibits any form of solicitation within 100 feet of your polling place.



THANK YOU!

After you slide your ballot into the Ballot Box, you're finished! Don't leave without your "I Voted" sticker and wear it proudly!

OKALOOSA COUNTY POLLING PLACES

PCT #	PCT NAME	POLLING PLACE
1	Baker	Baker Area Recreation Assn. Bldg., 5503 Hwy 4, Baker
2	Blackman	Blackman Community Center, 7590 Hwy 189 N, Blackman
3	Milligan	Milligan Assembly of God Church, 5408 Hwy 4, Milligan
4	Holt	First Baptist Church of Holt, 532 Hwy 90 W, Holt
5	Laurel Hill	First Baptist Church of Laurel Hill, 3972 2nd Ave, Laurel Hill
6	Garden City	Auburn Pentecostal Church, 6144 Hwy 85 N, Crestview
7	Dorcas	Dorcas Baptist Church, Education Bldg, 5880 McCallum Rd, Dorcas
8	Honey Creek	Emmanuel Baptist Church, 3252 James Lee Blvd E, Crestview
9*	Yellow River	New Beginnings Church, 412 James Lee Blvd W, Crestview
10	West Wright	The Covenant Community Church, 1007 Gospel Rd, Ft Walton Beach
11	East CV	Lifepoint Church, 400 Ferdon Blvd S, Crestview
12	West CV	Carver Hill School, 461 School Ave W, Crestview
13	North CV	Woodlawn Baptist Church, 824 Ferdon Blvd N, Crestview
14	West NV	St. Jude's Episcopal Church, 200 Partin Dr N, Niceville
15	Valparaiso	First Baptist Church of Valparaiso, 444 Valparaiso Pkwy, Valparaiso
16**	Shalimar	Okaloosa County Administration Building, 1250 Eglin Pkwy, Shalimar
17	Central Wright	Wright Baptist Church, 795 Beal Pkwy NW, Ft Walton Beach
18†	Ocean City	Beachside Community Church, 200 Racetrack Rd NW, Ft Walton Beach
19	East FWB	Beulah First Baptist Church, 109 McGriff St, Ft Walton Beach
20	West Destin	Destin Community Center, 101 Stahlman Ave, Destin
21	Mary Esther	First Baptist Church, 28 North St, Mary Esther
22	S. Central FWB	St. Mary Catholic Church Parish Life Center, 110 St. Mary Ave SW, Ft Walton Beach
23	Eglin	West Gate Chapel, Eglin Blvd - Bldg 2574, Eglin AFB
24	West FWB	Knights of Columbus, 205 Carol Ave NW, Ft Walton Beach
25	N Central NV	Holy Name of Jesus Catholic Church, 1200 Valparaiso Blvd, Niceville
26	Seminole	Christ Our Redeemer Catholic Church, 1028 White Point Rd, Niceville
27	Cinco Bayou	Cinco Bayou Town Hall, 10 Yacht Club Dr, Ft Walton Beach
28	Garniers	Cinco Bayou Town Hall, 10 Yacht Club Dr, Ft Walton Beach
29	Golf Course	Trinity United Methodist Church, 403 Racetrack Rd NW, Ft Walton Beach
30	Okaloosa Island	Elks Lodge, 1335 Miracle Strip Pkwy, Ft Walton Beach
31	Longwood	Bob Hope Village Welcome Center, 92 Sunset Ln, Shalimar
32	Ferry Park	The Church of Christ, 232 Hollywood Blvd SE, Ft Walton Beach
33	Rocky Bayou	First Presbyterian Church, 1800 John Sims Pkwy, Niceville
34	Florosa	St. Peter Catholic Church, 100 Francis St, Mary Esther
35	North Destin	Destin United Methodist Church, 200 Beach Dr, Destin
36	South NV	Holy Name of Jesus Catholic Church, 1200 Valparaiso Blvd, Niceville
37††	Lake Lorraine	Okaloosa County Administration Building, 1250 Eglin Pkwy, Shalimar
38	North Gate	Salvation Army Chapel, 425 Mary Esther Cut-Off, Ft Walton Beach
39	E Wright	Sons of Italy Bldg, 808 South Dr, Ft Walton Beach
40	South Bluewater	Christ Our Redeemer Catholic Church, 1028 White Point Rd, Niceville
41	N Central FWB	St. Mary Catholic Church Parish Life Center, 110 St. Mary Ave SW, Ft Walton Beach
42	New Heights	Abundant Life Church, 233 Hill Ave N, Ft Walton Beach
43	S Central NV	Holy Name of Jesus Catholic Church, 1200 Valparaiso Blvd, Niceville
44	Central Destin	Destin United Methodist Church, 200 Beach Dr, Destin
45	South CV	Foxwood Country Club, 4927 Antioch Rd, Crestview
46	North Bluewater	Bluewater Community Church, 4580 Range Rd, Niceville
47	Wynnehaven Bch	St. Peter Catholic Church, 100 Francis St, Mary Esther
48	Westwood	The Meridian at Westwood, 1001 Mar Walt Dr NW, Ft Walton Beach
49	East Destin	Destin City Hall Annex, 4100 Indian Bayou Trl, Destin
50	South Destin	Destin City Hall Annex, 4100 Indian Bayou Trl, Destin
51	Airport Rd	Airport Road Church of Christ, 2845 Airport Rd, Crestview
52	Live Oak	Live Oak Baptist Church, 4565 Live Oak Church Rd, Crestview

POLLS OPEN FROM 7 AM TO 7 PM

* 9 Replaces Charles Walthall Building, Crestview
** 16 Co-located with Precinct 37 at Okaloosa County Administration Building, Shalimar
† 18 Replaces Westminster Presbyterian Church, Fort Walton Beach
†† 37 Co-located with Precinct 16 at Okaloosa County Administration Building, Shalimar

Paul Lux
Okaloosa County Supervisor of Elections
302 Wilson Street N., Suite 102
Crestview, FL 32536-3440



EARLY VOTING
OKALOOSA COUNTY
SUPERVISOR OF ELECTIONS

Monday, October 24 - Saturday, November 5

Early Voting Hours:

7 AM - 7 PM ALL DAYS

See page 3 for Early Voting Locations

BEAT THE RUSH, VOTE EARLY!



SAMPLE BALLOT
GENERAL ELECTION
NOVEMBER 8, 2016